

RECYFIX® PRO

Corrosion-free drainage system for private and public areas.



TECHNICAL GUIDE: **DC1.4**

Applications

Pedestrian areas
Shopping centres
Commercial areas
Shared areas
Swimming pools

Product Attributes

Choice of 4 clear opening widths 100, 150, 200 and 300mm
Load capacity up to D 400kN
Stainless, ductile iron, composite, and galvanised grating
Environmentally friendly with 100% recycled PP channel

Approvals/Standards

Slip rating as per AS 4586
Load rating as per EN 1433

Quality

ISO 9001:2008 Quality Management System

RECYFIX® PRO

Corrosion-free drainage system for private and public areas.

Applications

- Pedestrian and shared spaces
- Shopping centres
- Commercial areas
- Carparks
- Service stations

Requirements

- Modern and unique in its design.
- Extremely stable to guarantee long-term and permanent security.
- Resistant to environmental influences (frost, heat and moisture).
- Designed in accordance with EN 1433.

Solutions

- Channel made of recycled PP
- Loading capacity up to D 400kN



FIG. 1 RECYFIX® PRO 100 METROPOLIS with KTL coating.

The benefits of RECYFIX® PRO Channels



Pre-assembled ready for installation

- Channel and grating = one part
 - Easy handling on construction site
 - Cost-efficient transport
- = **Better gross margin**



High resistance

- High-grade composite
 - High resistance against frost, de-icing salt and UV rays
 - Withstands high temperature differences
- = **Durability**



Angle housing

- PE-angle housing
 - Ridges to stop any lateral movements
 - Inlaid gratings
- = **Security**



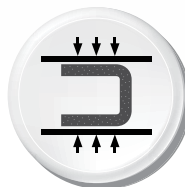
Award-winning design

- FIBRETEC® Slotted gratings honoured with Focus Open Design Award
 - Nomination for German design prize
- = **High quality work**



Low weight ensures easy handling on site

- Much lighter than comparison channels on market
 - Easy transport and installation
- = **Cost savings**



High-grade material

- RECYFIX® – stable and unbreakable
 - Elastic and extremely robust material
 - Withstands daily use of high loadings and temperature differences
- = **Security**

Components

Load Classes

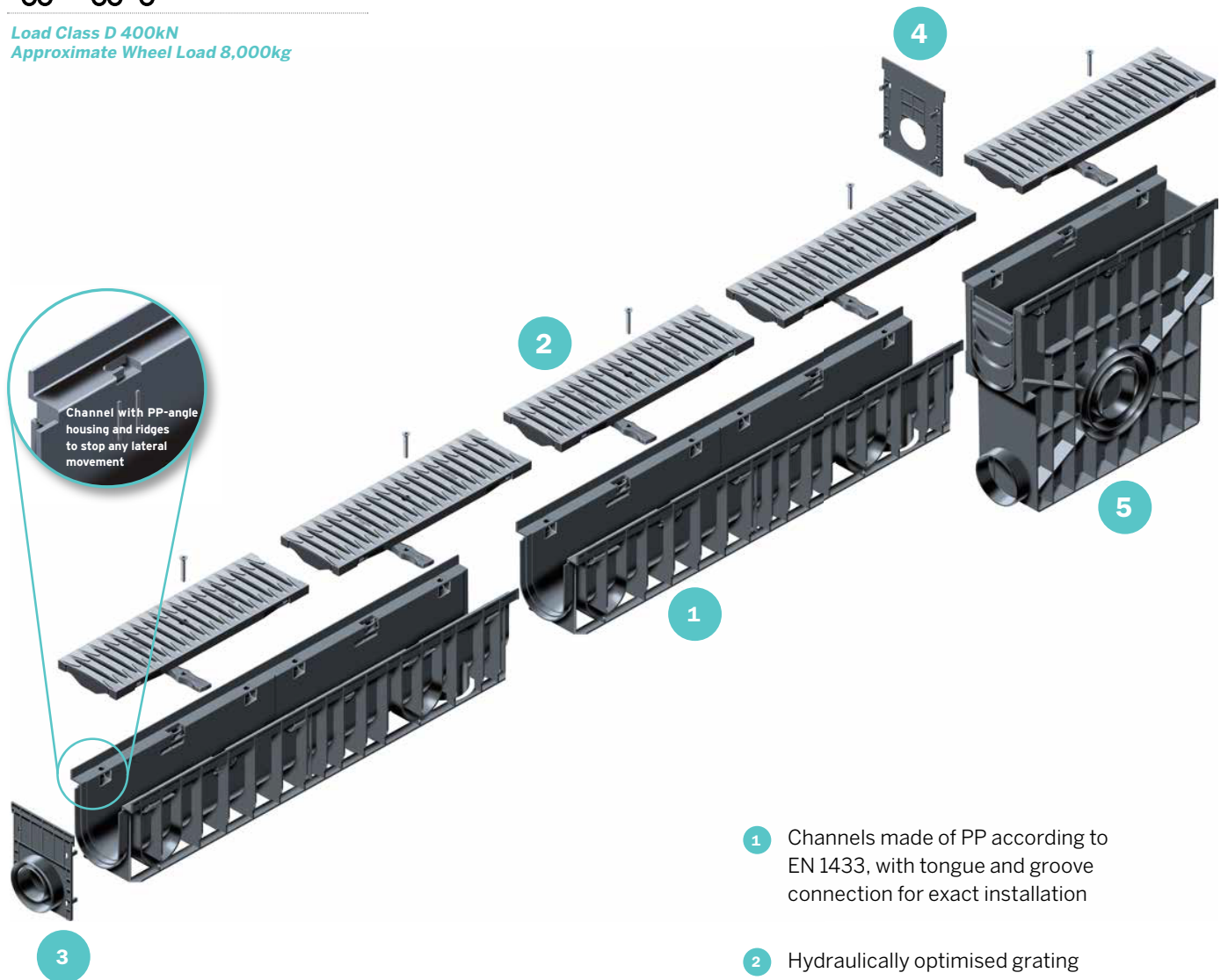
European Standard EN 1433



Load Class C 250kN
Approximate Wheel Load 5,000kg



Load Class D 400kN
Approximate Wheel Load 8,000kg



- 1 Channels made of PP according to EN 1433, with tongue and groove connection for exact installation
- 2 Hydraulically optimised grating options with an anti-slip surface
- 3 End cap without outlet
- 4 End cap with outlet
- 5 Trash box with pipe connection possibility

RECYFIX® PRO 100

Class C 250kN

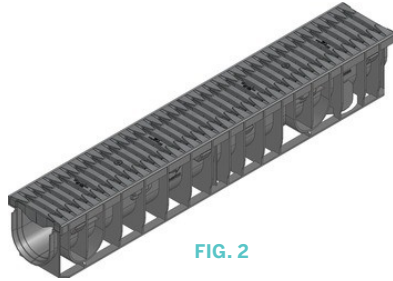


FIG. 2

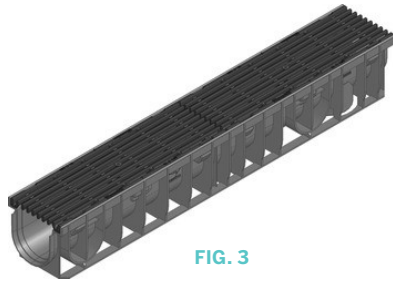
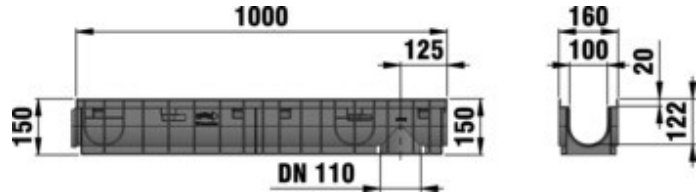


FIG. 3

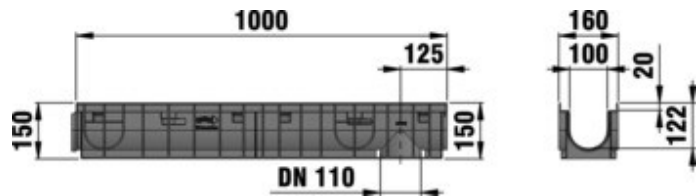


TABLE 1 RECYFIX® PRO 100 C 250kN

Code	Description	Intake cross-sect cm ² /m	Drainage cross-sect cm ²	Weight kg	Figure #
CHH01401507	Channel PRO 100 151mm Type 01 Fibretec	372	92	6.2	2
CHH01401510	Channel PRO 100 DI Longitudinal KTL Type 01	528	92	7.2	3

Class D 400kN

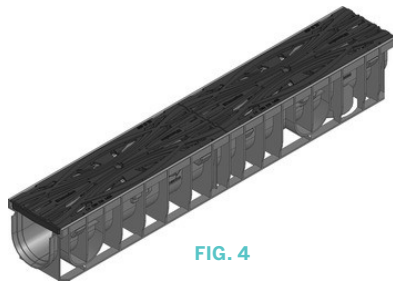


FIG. 4

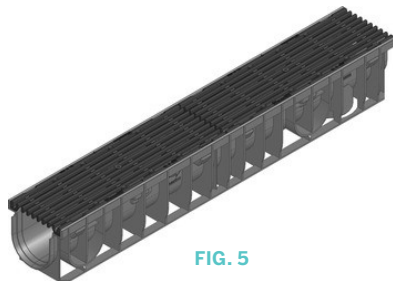
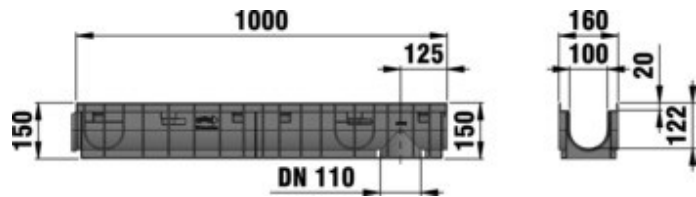


FIG. 5

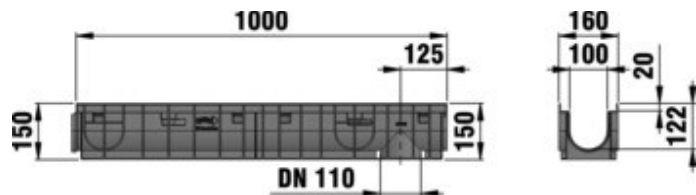


TABLE 2 RECYFIX® PRO 100 D 400kN

Code	Description	Intake cross-sect cm ² /m	Drainage cross-sect cm ²	Weight kg	Figure #
CHH01401513	Channel PRO 100 DI Metropolis KTL Type 01	165	92	12.5	4
CHH01401516	Channel PRO 100 DI Longitudinal KTL Type 01	528	92	10.4	5

Accessories

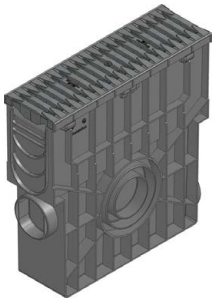


FIG. 6

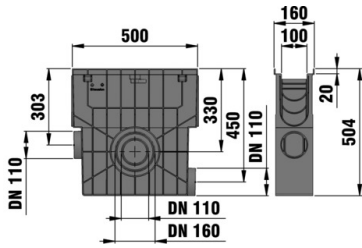


FIG. 7

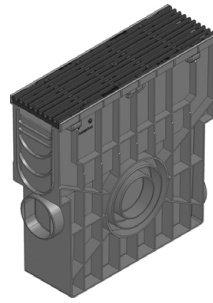


FIG. 8

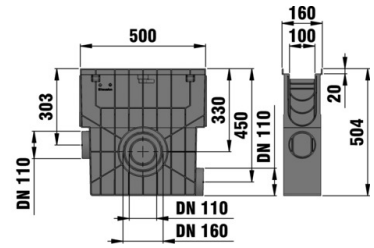


FIG. 9

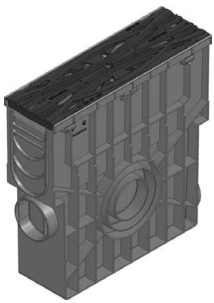


FIG. 10

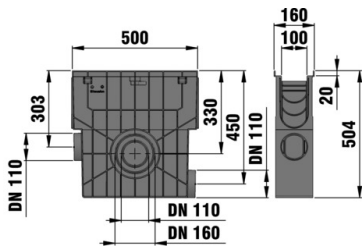


FIG. 11

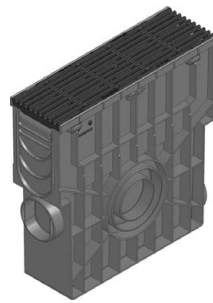


FIG. 12

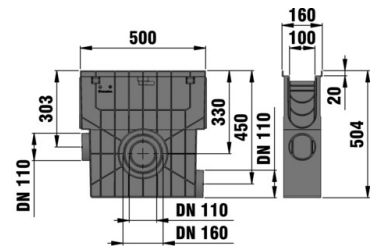


FIG. 13

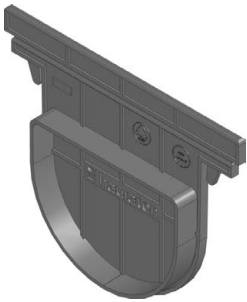


FIG. 14

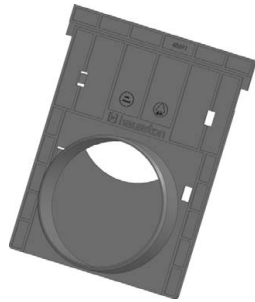


FIG. 15

TABLE 3 RECYFIX® PRO 100 C 250kN and D 400kN Accessories

Code	Description	Length mm	Width mm	Height mm	Figure #
CHH01401522	Trash Box PRO 100 Fibretec Slotted 9mm C250 with Mud Bucket	500	160	504	6 & 7
CHH01401519	Trash Box PRO 100 DI Longitudinal KTL C250 with PE Mud Bucket	500	160	504	8 & 9
CHH01401528	Trash Box PRO 100 DI Metropolis KTL D400 with PE Mud Bucket	500	160	504	10 & 11
CHH01401531	Trash Box PRO 100 DI Longitudinal KTL D400 with PE Mud Bucket	500	160	504	12 & 13
CHH01401300.2	End Cap PRO NC 100 Blank Type 01	-	160	124	14
CHH01401300.3	End Cap PRO NC 100 Type 01 with 100mm PVC Outlet	-	160	200	15

RECYFIX® PRO 150

Class C 250kN

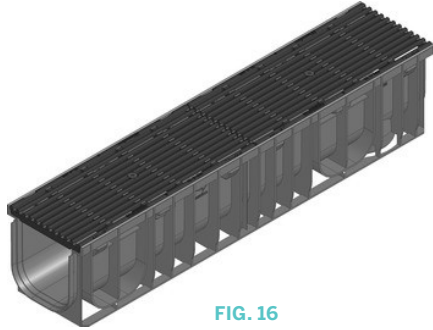


FIG. 16

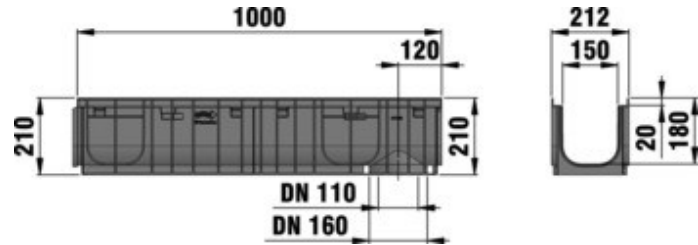


TABLE 4 RECYFIX® PRO 150 C 250kN

Code	Description	Intake cross-sect cm ² /m	Drainage cross-sect cm ²	Weight kg	Figure #
CHH01401534	Channel PRO 150 DI Longitudinal KTL Type 01	740	230	17.2	16

Accessories



FIG. 17

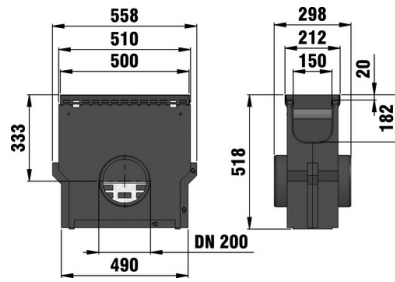


FIG. 18

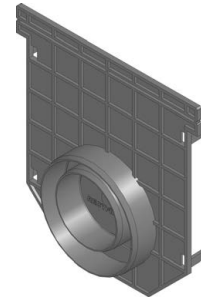


FIG. 19

TABLE 5 RECYFIX® PRO 150 C 250kN Accessories

Code	Description	Length mm	Width mm	Height mm	Figure #
CHH01401537	Trash Box PRO 150 DI Longitudinal KTL with Galv Mud Bucket	500	212	518	17 & 18
CHH01401364.2	End Cap PRO NC 150 Type 01 with 75-110 PVC Outlet	-	208	218	19

RECYFIX® PRO 200

Class C 250kN

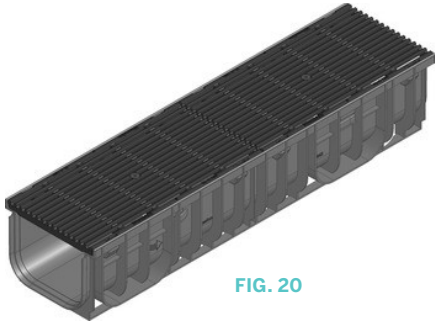


FIG. 20

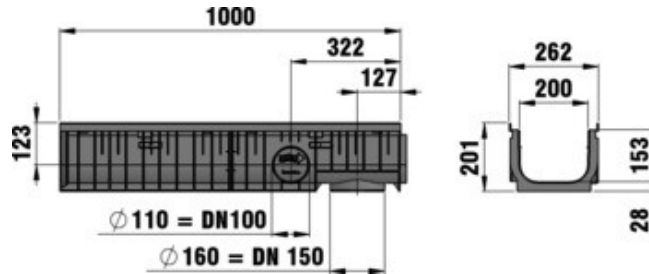


TABLE 6 RECYFIX® PRO 200 C 250kN

Code	Description	Intake cross-sect cm ² /m	Drainage cross-sect cm ²	Weight kg	Figure #
CHH01401543	Channel PRO 200 DI Longitudinal KTL Type 01	951	294	22.6	20

Class D 400kN

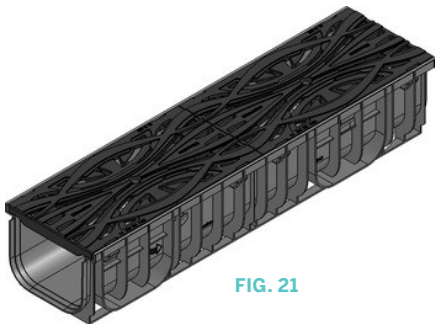


FIG. 21

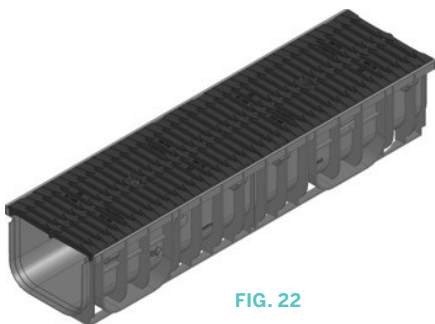
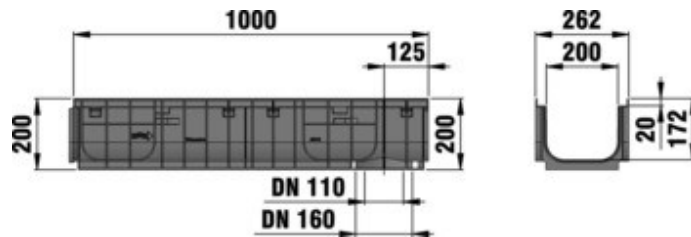


FIG. 22

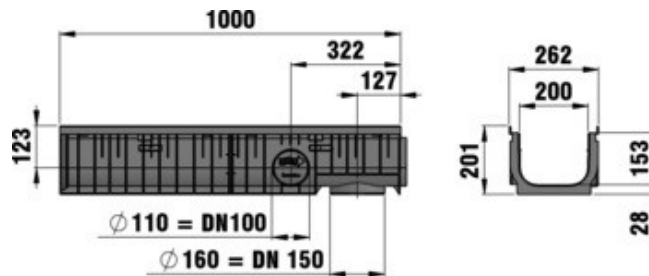


TABLE 7 RECYFIX® PRO 200 D 400kN

Code	Description	Intake cross-sect cm ² /m	Drainage cross-sect cm ²	Weight kg	Figure #
CHH01401546	Channel PRO 200 DI Metropolis KTL Type 010	279	294	23.8	21
CHH01401549	Channel PRO 200 DI G-TEC KTL Type 010	595	294	20.6	22

Accessories



FIG. 23

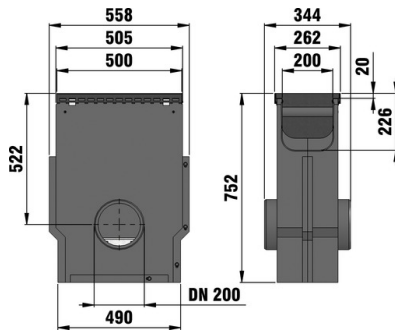


FIG. 24



FIG. 25

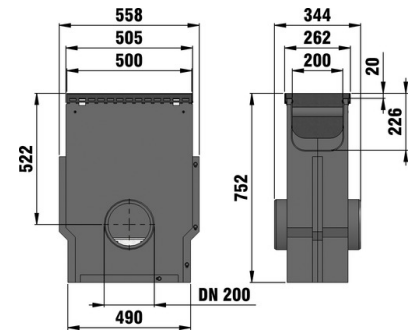


FIG. 26



FIG. 27

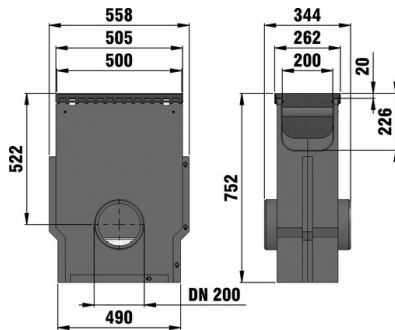


FIG. 28



FIG. 29

TABLE 8 RECYFIX® PRO 200 C 250kN and D 400kN Accessories

Code	Description	Length mm	Width mm	Height mm	Figure #
CHH01401552	Trash Box PRO 200 DI Longitudinal KTL C250 with Galv Mud Bucket	500	262	752	23 & 24
CHH01401555	Trash Box PRO 200 DI Metropolis KTL D400 with PE Mud Bucket	500	262	752	25 & 26
CHH01401558	Trash Box PRO 200 DI G-TEC KTL D400 with PE Mud Bucket	500	262	752	27 & 28
CHH01401375.2	End Cap PRO NC 200 Type 010 with 100mm PVC Outlet	28	258	217	29

RECYFIX® PRO 300

Class C 250kN

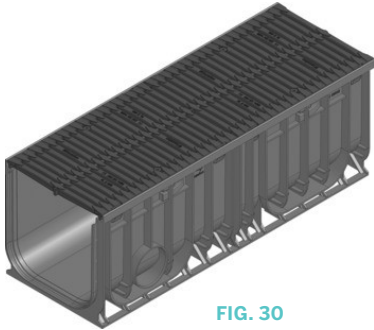


FIG. 30

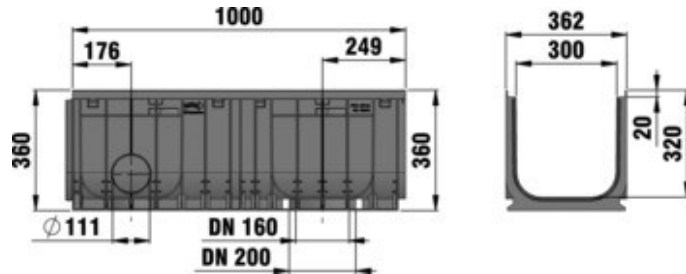


TABLE 9 RECYFIX® PRO 300 C 250kN

Code	Description	Intake cross-sect cm ² /m	Drainage cross-sect cm ²	Weight kg	Figure #
CHH01401564	Channel PRO 300 DI G-TEC KTL Type 010	960	873	38.1	30

Class D 400kN

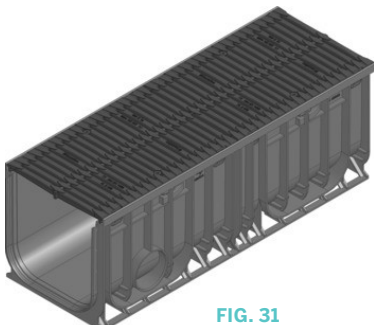


FIG. 31

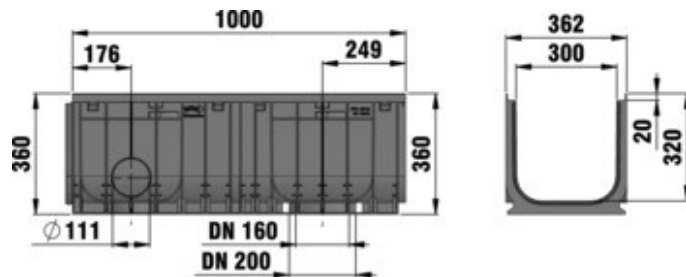


TABLE 10 RECYFIX® PRO 300 D 400kN

Code	Description	Intake cross-sect cm ² /m	Drainage cross-sect cm ²	Weight kg	Figure #
CHH01401567	Channel PRO 300 DI G-TEC KTL Type 010	960	873	38.1	31

Accessories



FIG. 32

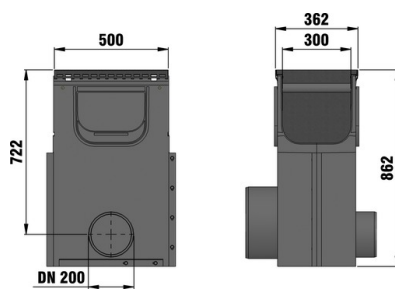


FIG. 33



FIG. 34

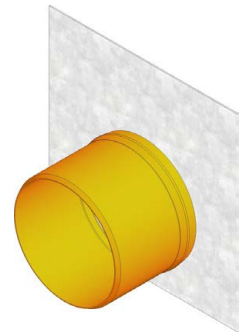


FIG. 35

TABLE 11 RECYFIX® PRO 300 C 250kN and D400 kN Accessories

Code	Description	Length mm	Width mm	Height mm	Figure #
CHH01401570	Trash Box PRO 300 DI G-TEC KTL D400 Galv Mud Bucket with 175mm Outlet	500	362	862	32 & 33
CHH01401390	End Cap PRO NC 300 Galv Blank Type 010	2	360	360	34
CHH01401395	End Cap PRO NC 300 Type 010 with 175mm PVC Outlet	154	360	360	35

Installation Guidelines

**Installation example
concrete class A 15 - C 250**

* y = Channel height plus camber

Category according to EN 1433 / DIN 19580	A 15	B 125	C 250	D 400**	E 600	F 900	Applying to following systems: RECYFIX PRO 100, 150, 200, 300 RECYFIX NC 100, 150, 200, 300 SERVICE CHANNEL RECYFIX PRO 200, 300
Foundation: width x / thickness z / height y (in cm)	10 / 10 / *	10 / 10 / *	10 / 15 / *				
The named concrete quality is a minimum quality***							
EN 206-1 / DIN 1045-2	quality of concrete stretcher	C 30/37 XF 4	C 30/37 XF 4	C 30/37 XF 4			Format DIN A4 scale 1:5 Unit 4, Frenchs Avenue LU6 1BH Dunstable / Bedfordshire Tel. +44 1582 50 1380 technical@hauraton.co.uk
	with danger of frost on the lateral support	C 30/37 XD 1	C 30/37 XD 1	C 30/37 XD 1			
The installation examples / advise constantly are adapted to the technical conditions. With new editions older expenditures lose their validity. Before planning or installation please verify the current version at www.hauraton.com In building construction is a sealing layer below the channels necessary.		Date: 24.10.2018	Our general installation instructions apply.			0000039648.dwg EBBw RF-PRO-100 Typ 010 Rinnenunterteil Einbaubeispiel Klasse C 250 in Beton	

**Installation example
in asphalted areas class C 250**

* y = Channel height plus camber

Category according to EN 1433 / DIN 19580	A 15	B 125	C 250	D 400**	E 600	F 900	Applying to following systems: RECYFIX PRO 100, 150, 200, 300 RECYFIX NC 100, 150, 200, 300 SERVICE CHANNEL RECYFIX PRO 200, 300
Foundation: width x / thickness z / height y (in cm)			10 / 15 / *				
The named concrete quality is a minimum quality**							
EN 206-1 / DIN 1045-2	quality of concrete stretcher		C 30/37 XF 4				Format DIN A4 scale 1:5 Unit 4, Frenchs Avenue LU6 1BH Dunstable / Bedfordshire Tel. +44 1582 50 1380 technical@hauraton.co.uk
	with danger of frost on the lateral support		C 30/37 XD 1				
The installation examples / advise constantly are adapted to the technical conditions. With new editions older expenditures lose their validity. Before planning or installation please verify the current version at www.hauraton.com In building construction is a sealing layer below the channels necessary.		Date: 25.10.2018	Our general installation instructions apply.			0000055953.dwg EBBw RF-PRO-100 Typ 010 Rinnenunterteil Einbaubeispiel Klasse C 250 in Asphalt	

Installation example Pavement class C 250

3-5 mm durable overhang

The row of paver along the channel run placed in concrete bedding

Pavement / Flagstone

Pavement bedding

Base course

Frost resistant sub-base

min. x

y

z

* y = Channel height plus camber

Category according to EN 1433 / DIN 19580	A 15	B 125	C 250	D 400**	E 600	F 900	Applying to following systems:
Foundation: width x / thickness z / height y (in cm)			10 / 15 / *				RECYFIX PRO 100, 150, 200, 300 RECYFIX NC 100, 150, 200, 300 SERVICE CHANNEL RECYFIX PRO 200, 300
The named concrete quality is a minimum quality***			C 20/25				
EN 206-1 / DIN 1045-2	without danger of frost on the lateral support		C 30/37 XD 1				
	with danger of frost on the lateral support						
The installation examples / advise constantly are adapted to the technical conditions. With new editions older expenditures lose their validity. Before planning or installation please verify the current version at www.hauraton.com In building construction is a sealing layer below the channels necessary.		Date: 24.10.2018	Our general installation instructions apply.		Format DIN	A4	
** Not for use in continuously frequented areas of carriageways or motorways *** European Standard. C 20/25 = minimum 25MPa, C 30/37 = minimum 37MPa		0000039929.dwg	EBBw	scale	1:5	Unit 4, Frenchs Avenue LUG 1BH Dunstable / Bedfordshire Tel. +44 1582 50 1380 technical@hauraton.co.uk	
RF-PRO-100 Typ 010 Rinnenunterteil Einbaubeispiel Klasse C 250 in Pflaster							

Installation example concrete class D 400

3-5 mm durable overhang

Expansion joint

Concrete wearing layer

Base course

Frost resistant sub-base

X

y

z

reinforcing steel bar Ø 10 mm every 40 cm

* y = Channel height plus camber

Category according to EN 1433 / DIN 19580	A 15	B 125	C 250	D 400**	E 600	F 900	Applying to following systems:
Foundation: width x / thickness z / height y (in cm)				15 / 15 / *			RECYFIX PRO 100, 150, 200, 300
The named concrete quality is a minimum quality***				C 30/37 XF 4			
EN 206-1 / DIN 1045-2	quality of concrete stretcher			C 30/37 XD 1			
	with danger of frost on the lateral support						
The installation examples / advise constantly are adapted to the technical conditions. With new editions older expenditures lose their validity. Before planning or installation please verify the current version at www.hauraton.com In building construction is a sealing layer below the channels necessary.		Date: 24.10.2018	Our general installation instructions apply.		Format DIN	A4	
** Not for use in continuously frequented areas of carriageways or motorways *** European Standard. C 20/25 = minimum 25MPa, C 30/37 = minimum 37MPa		0000048362.dwg	EBBw	scale	1:5	Unit 4, Frenchs Avenue LUG 1BH Dunstable / Bedfordshire Tel. +44 1582 50 1380 technical@hauraton.co.uk	
RF-PRO-100 Typ 010 Rinnenunterteil Einbaubeispiel Klasse D 400 in Beton							

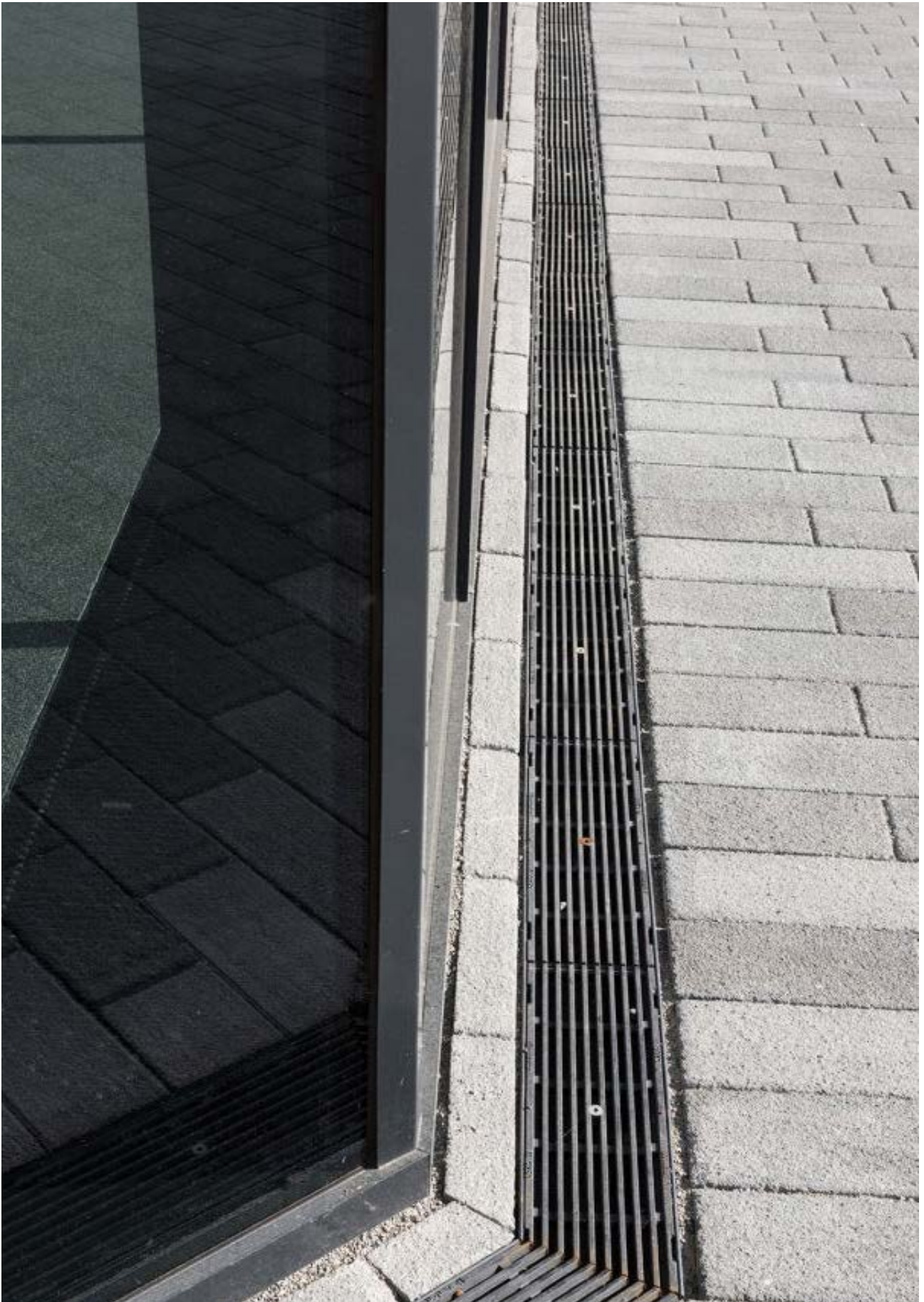


FIG. 36 RECYFIX® PRO 150 Longitudinal DI KTL D 400kN



FIG. 37 RECYFIX® PRO 200 G-Tech DI KTL D 400kN



Scan for more
information

Disclaimer: While every effort has been made to ensure that the information in this document is correct and accurate, users of Hygrade Water product or information within this document must make their own assessment of suitability for their particular application. Product dimensions are nominal only, and should be verified if critical to a particular installation. No warranty is either expressed, implied, or statutory made by Hygrade Water unless expressly stated in any sale and purchase agreement entered into between Hygrade Water and the user.

April 2024

0800 494 723
hygradewater.co.nz

102 Neilson Street
Onehunga, Auckland 1061, New Zealand
PO Box 58142, Botany, Auckland 2163

