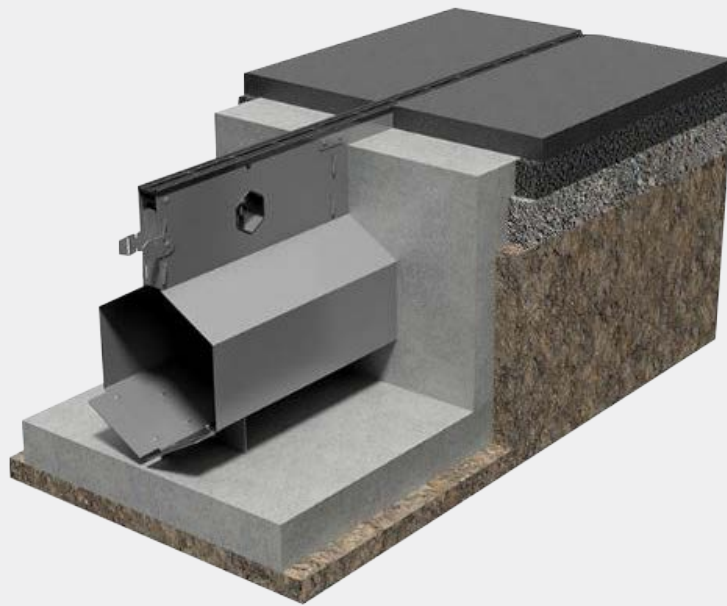


Gatic® Slotdrain

A tough, unobtrusive, low profile surface drainage system capable of handling large hydraulic volumes.



TECHNICAL GUIDE: **DC2.1**

Applications

CastSlot is suitable for car parks and industrial units

UltraSlot is suitable for airports, ports, highways and similar areas

PaveSlot is suitable for all paved areas in public and commercial projects

Product Attributes

CastSlot load rated up to F 900kN

UltraSlot load rated up to F 900kN

PaveSlot load rated up to C 250kN

Galvanised steel finish

Mechanically assembled

Approvals/Standards

European Standard EN 124

Complies with BS EN 1433:2002

Quality

ISO 9001:2008 Quality Management System

ISO 14001:2015 Environmental Management System

Overview

- The current Slotdrain range consists of CastSlot, UltraSlot and PaveSlot and for total design flexibility, and includes matching accessories. All channels are manufactured in 3 metre, 1 metre and 0.5 metre lengths of galvanised steel, benefitting from fewer joints and improved flow performance. Bespoke units are available on request to suit specific design requirements and are also available in stainless steel.
- GATIC® Slotdrain channels are suitable for applications up to F900 (depending on the system type). The hexagonal profile ensures the systems can handle everything from a rain drop to a rainstorm with similar efficiency. The V-shaped channel base aids a self-cleansing flow, and a tapered throat helps prevent blockages.

Applications

GATIC® CastSlot sits neatly within concrete, asphalt and block surface finishes. CastSlot features an electro painted ductile iron throat section, which is securely fixed to the galvanised steel channel body to provide an exceptionally robust yet discreet drainage system. CastSlot is ideal for areas of vehicular traffic such as car parks and industrial units where there is slow turning traffic. Available with a 30mm opening and a Treadsafe option, which reduces the slot opening from 30mm wide to 2x 10mm wide slots.

GATIC® UltraSlot is used in external pavement areas such as airports, ports, highways and similar areas. The system is designed to withstand infrequent heavy loads. A Treadsafe option is available, which reduces the slot opening from 30mm wide to 2x 9mm wide slots. This has no effect on the intake capacity of the system but will make the channel safe to cross for pedestrians.

GATIC® PaveSlot is used to drain external hard surface areas where a neat, unobtrusive aesthetic is required. The system is used with paving units laid against the top edge of the channel. The system is suitable for all large paved areas in public and commercial projects.



FIG. 1 Christchurch Airport UltraSlot Installation

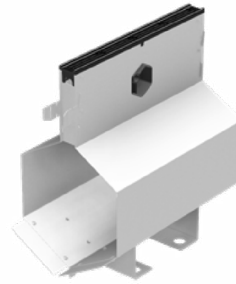


FIG. 2 GATIC® CastSlot Channel



FIG. 3 GATIC® UltraSlot Channel

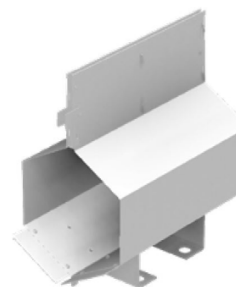


FIG. 4 GATIC® PaveSlot Channel

TABLE 1 GATIC® CastSlot F 900kN

Description	Width (w) (mm)	Height (h) (mm)	Invert (i) (mm)	Throat Depth (T1) (mm)	Throat Width (mm)	Slot Orifice (mm)	Intake Area/ Metre (mm ²)	Weight (kg)
100mm CastSlot - 3m	100	357	308	200	51	30	26350	43.3
150mm CastSlot - 3m	150	415	366	200	51	30	26350	49.5
225mm CastSlot - 3m	225	501	452	200	51	30	26350	59.7
300mm CastSlot - 3m	300	587	538	200	51	30	26350	68.9
350mm CastSlot - 3m	350	645	596	200	51	30	26350	75.1
400mm CastSlot - 3m	400	712	652	200	51	30	26350	124.8
500mm CastSlot - 3m	500	828	768	200	51	30	26350	145.4
600mm CastSlot - 3m	600	1091	1031	200	51	30	26350	215.1

Note: Treadsafe option available on request

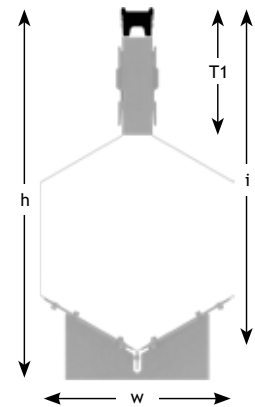


TABLE 2 GATIC® UltraSlot F 900kN

Description	Width (w) (mm)	Height (h) (mm)	Invert (i) (mm)	Throat Depth (T1) (mm)	Throat Width (mm)	Slot Orifice (mm)	Intake Area/ Metre (mm ²)	Weight (kg)
100mm UltraSlot - 3m	100	357	308	200	70	30	30083	31.7
150mm UltraSlot - 3m	150	415	366	200	70	30	30083	37.9
225mm UltraSlot - 3m	225	501	452	200	70	30	30083	48.1
300mm UltraSlot - 3m	300	587	538	200	70	30	30083	57.3
350mm UltraSlot - 3m	350	645	596	200	70	30	30083	63.6
400mm UltraSlot - 3m	400	713	653	200	70	30	30083	114.4
500mm UltraSlot - 3m	500	829	769	200	70	30	30083	135
600mm UltraSlot - 3m	600	1091	1031	200	70	30	30083	205.4

Note: Treadsafe option available on request

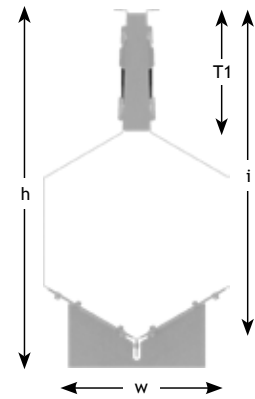
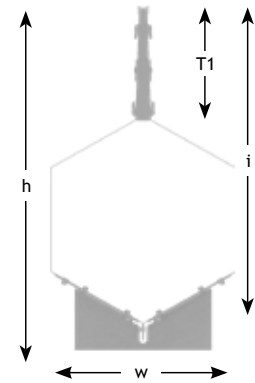


TABLE 3 GATIC® PaveSlot F 900kN

Description	Width (w) (mm)	Height (h) (mm)	Invert (i) (mm)	Throat Depth (T1) (mm)	Throat Width (mm)	Slot Orifice (mm)	Intake Area/ Metre (mm ²)	Weight (kg)
100mm UltraSlot - 3m	100	357	308	200	16	10	10261	30.3
150mm UltraSlot - 3m	150	415	366	200	16	10	10261	36.5
225mm UltraSlot - 3m	225	501	452	200	16	10	10261	46.7
300mm UltraSlot - 3m	300	587	538	200	16	10	10261	55.9
350mm UltraSlot - 3m	350	645	596	200	16	10	10261	62.1
400mm UltraSlot - 3m	400	712	652	200	16	10	10261	111.9
500mm UltraSlot - 3m	500	828	768	200	16	10	10261	132.5
600mm UltraSlot - 3m	600	1091	1031	200	16	10	10261	202.8

Note: Treadsafe option available on request



Installation

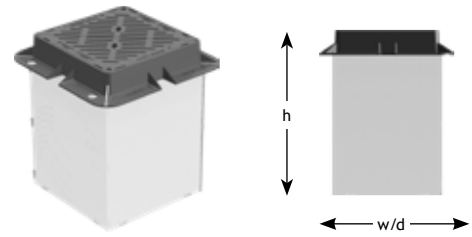
- Full installation instructions available on request
- Full technical and hydraulic programmes available to evaluate the most economical and effective systems to suit your needs



Gatic CastSlot and UltraSlot channels lock together to ensure alignment and a tight fit prior to taping and pouring

**NEW
LOCKING
DESIGN**

FIG. 5 Access Boxes / Outlet Boxes / Silt Boxes for GATIC® CastSlot & UltraSlot



Boxes

TABLE 4 Access Boxes - GATIC® CastSlot & UltraSlot

Description	To Suit Channels	Load Rating	Height (h) (mm)	Width (w) (mm)	Depth (d) (mm)	Intake Area (mm ²)	Pipe Outlet Sizes (mm)	Box Weight (kg)	Cover/Grate Weight (kg)	Total Weight (kg)
Access Box c/w Double Triangular Grating	Up to 225	Up to D400	475	308	308	9008	N/A	6.7	38.4	45.1
	225 to 400	Up to D400	675	485	485	33486	N/A	26.7	67.6	94.3
	400 to 600	Up to D400	1055	686	686	82845	N/A	73.1	122.9	196.1
	Up to 225	Up to F900	475	308	308	9008	N/A	6.7	40.1	46.8
	225 to 400	Up to F900	675	485	485	33486	N/A	26.7	76.7	103.4
	400 to 600	Up to F900	1055	686	686	82845	N/A	73.1	146.2	219.3

TABLE 5 Outlet Boxes - GATIC® CastSlot & UltraSlot

Description	To Suit Channels	Load Rating	Height (h) (mm)	Width (w) (mm)	Depth (d) (mm)	Intake Area (mm ²)	Pipe Outlet Sizes (mm)	Box Weight (kg)	Cover/Grate Weight (kg)	Total Weight (kg)
Outlet Box c/w Double Triangular Grating	Up to 225	Up to D400	740	308	308	9008	115 / 165 / 205 / 255	10.6	38.4	49.1
	225 to 400	Up to D400	1125	485	485	33486	205 / 255 / 320 / 360 / 440	44	67.6	111.6
	400 to 600	Up to D400	1495	686	686	82845	320 / 360 / 440	101.7	122.9	224.7
	Up to 225	Up to F900	740	308	308	9008	115 / 165 / 205 / 255	10.6	40.1	50.7
	225 to 400	Up to F900	1125	485	485	33486	205 / 255 / 320 / 360 / 440	44	76.7	120.7
	400 to 600	Up to F900	1495	686	686	82845	320 / 360 / 440	101.7	146.2	247.9

TABLE 6 Silt Boxes - GATIC® CastSlot & UltraSlot

Description	To Suit Channels	Load Rating	Height (h) (mm)	Width (w) (mm)	Depth (d) (mm)	Intake Area (mm ²)	Pipe Outlet Sizes (mm)	Box Weight (kg)	Cover/Grate Weight (kg)	Total Weight (kg)
Silt Box c/w Double Triangular Grating	Up to 225	Up to D400	930	308	308	9008	115 / 165 / 205 / 255	14.1	38.4	55.3
	225 to 400	Up to D400	1415	485	485	33486	205 / 255 / 320 / 360 / 440	57.1	67.6	136.5
	400 to 600	Up to D400	1935	686	686	82845	320 / 360 / 440	133.8	122.9	287.8
	Up to 225	Up to F900	930	308	308	9008	115 / 165 / 205 / 255	14.1	40.1	55.3
	225 to 400	Up to F900	1415	485	485	33486	205 / 255 / 320 / 360 / 440	57.1	76.7	145.6
	400 to 600	Up to F900	1935	686	686	82845	320 / 360 / 440	133.8	146.2	311

FIG. 6 Access Boxes / Outlet Boxes / Silt Boxes for GATIC® PaveSlot

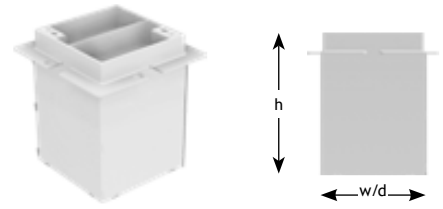


TABLE 7 Access Boxes - GATIC® PaveSlot

Description	To Suit Channels	Load Rating	Height (h) (mm)	Width (w) (mm)	Depth (d) (mm)	Intake Area (mm ²)	Pipe Outlet Sizes (mm)	Box Weight (kg)	Cover/Grate Weight (kg)	Total Weight (kg)
Access Box c/w Galvanised Recessed Cover	Up to 225	Up to C250	475	308	308	2710	N/A	6.7	28.7	35.4
	225 to 400	Up to C250	675	485	485	4460	N/A	26.7	50.5	77.2
	400 to 600	Up to C250	1055	686	686	6460	N/A	73.1	78	151.1

TABLE 8 Outlet Boxes - GATIC® PaveSlot

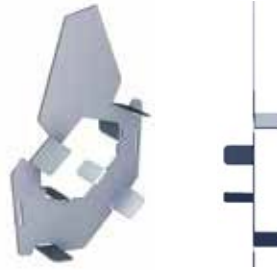
Description	To Suit Channels	Load Rating	Height (h) (mm)	Width (w) (mm)	Depth (d) (mm)	Intake Area (mm ²)	Pipe Outlet Sizes (mm)	Box Weight (kg)	Cover/Grate Weight (kg)	Total Weight (kg)
Outlet Box c/w Galvanised Recessed Cover	Up to 225	Up to C250	740	308	308	2710	115 / 165 / 205 / 255	10.6	28.7	39.3
	225 to 400	Up to C250	1125	485	485	4460	205 / 255 / 320 / 360 / 440	44	50.5	94.5
	400 to 600	Up to C250	1495	686	686	6460	320 / 360 / 440	101.7	78	179.7

TABLE 9 Silt Boxes - GATIC® PaveSlot

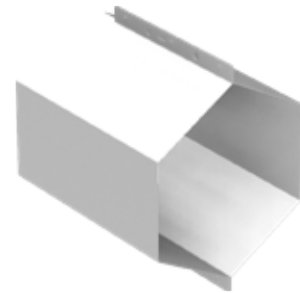
Description	To Suit Channels	Load Rating	Height (h) (mm)	Width (w) (mm)	Depth (d) (mm)	Intake Area (mm ²)	Pipe Outlet Sizes (mm)	Box Weight (kg)	Cover/Grate Weight (kg)	Total Weight (kg)
Silt Box c/w Galvanised Recessed Cover	Up to 225	Up to C250	930	308	308	2710	115 / 165 / 205 / 255	14.1	28.7	45.4
	225 to 400	Up to C250	1415	485	485	4460	205 / 255 / 320 / 360 / 440	57.1	50.5	119.4
	400 to 600	Up to C250	1935	686	686	6460	320 / 360 / 440	133.8	78	242.8

TABLE 10 Drop Connectors - GATIC® CastSlot / UltraSlot / PaveSlot

Description	Weight (kg)
100-150mm Drop Connector	0.4
150-225mm Drop Connector	0.7
225-300mm Drop Connector	1
300-350mm Drop Connector	0.9
350-400mm Drop Connector	1.7
400-500mm Drop Connector	2.7
500-600mm Drop Connector	5.9

**TABLE 11** Catchpit Connectors - GATIC® CastSlot / UltraSlot / PaveSlot

Description	Length (mm)	Effective Length (mm)	Weight (kg)
100mm Catchpit Connector	375	300	1.9
150mm Catchpit Connector	375	300	2.6
225mm Catchpit Connector	375	300	3.9
300mm Catchpit Connector	375	300	5
350mm Catchpit Connector	375	300	5.8
400mm Catchpit Connector	375	300	10.9
500mm Catchpit Connector	375	300	13.5
600mm Catchpit Connector	375	300	21.9

**TABLE 12** End Cap Outlets - GATIC® CastSlot / UltraSlot / PaveSlot

Description	Pipe Outlet Sizes (mm)	Weight (kg)
100mm End Cap / Outlet	92	0.2
150mm End Cap / Outlet	115	0.4
225mm End Cap / Outlet	115 / 165 / 205	0.7
300mm End Cap / Outlet	115 / 165 / 205 / 255	1.2
350mm End Cap / Outlet	115 / 165 / 205 / 255 / 320	1.6
400mm End Cap / Outlet	115 / 165 / 205 / 255 / 320 / 360	3.3
500mm End Cap	N/A	4.9
600mm End Cap	N/A	10.6





Scan for more
information

Disclaimer: While every effort has been made to ensure that the information in this document is correct and accurate, users of Hygrade Water product or information within this document must make their own assessment of suitability for their particular application. Product dimensions are nominal only, and should be verified if critical to a particular installation. No warranty is either expressed, implied, or statutory made by Hygrade Water unless expressly stated in any sale and purchase agreement entered into between Hygrade Water and the user.

0800 494 723
hygradewater.co.nz

102 Neilson Street
Onehunga, Auckland 1061, New Zealand
PO Box 58 142, Botany, Auckland 2163

