

# 1 Piece Ball Valve BSP

Low cost 316 Stainless Steel Ball Valve



TECHNICAL GUIDE: **VH5.1**

## Applications

Chemical dosing  
Water treatment  
General service

## Product Attributes

Compact  
Lockable handle  
All 316 SS construction  
Blow out proof stem

## Quality

ISO 9001:2008 Quality  
Management Standard

# Investment cast stainless steel ball valve, screwed end reduced bore.

## Features

- SS316 body and ball
- Reduced bore
- Threaded BSP
- Internal entry blow-out proof stem
- Lever handle with locking device

**TABLE 1** Material specifications and part list

No.	Description	Material
1	Body	CF8M
2	Cap	CF8M
3	Stem	SS316
4	Ball	CF8M
5	Seat	PTFE
6	Joint Gasket	PTFE
7	Thrust Washer	PTFE
8	Stem Packing	PTFE
9	Washer	SS304
10	Spring Washer	SS304
11	Stem Nut	SS304
12	Locking Device	SS304
13	Handle	SS304
14	Handle Sleeve	Plastic

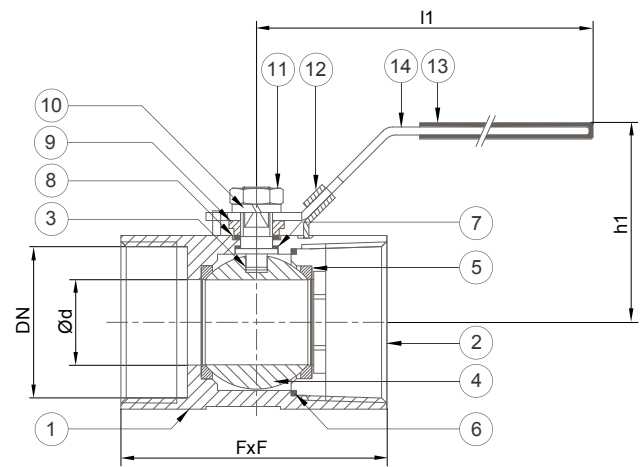
**TABLE 2** V1 DN8 - DN50

DN	NPS	FxF	Ød	h1	l1	CV Factor	Torque (N.m)	Weight (Kg)
8	¼"	40	5	33	67	4	13.83	0.06
10	"	45	7	36	67	4	67	0.10
15	½"	58	9	37	93	4.5	93	0.16
20	¾"	60	12.5	42	93	9	20.75	0.26
25	1"	71	16	52	103	16	41.49	0.38
32	1 ¼"	78	20	56	103	24	62.24	0.61
40	1 ½"	82.5	25	65	125	37	82.98	0.85
50	2"	100	32	90	125	68	96.81	1.40

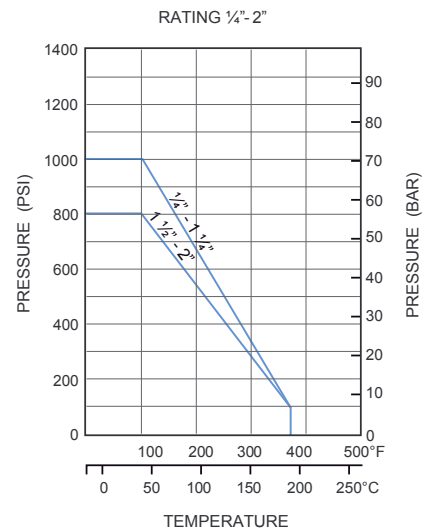
Dimensions (mm)

## Technical Data

- Size Range: DN8 - DN50 (1/4" - 2")
- Pressure Rating: 1000PSI W.O.G
- Pressure Test: API598



**FIG. 1**



**TABLE 3**



Scan for more  
information

**Disclaimer:** While every effort has been made to ensure that the information in this document is correct and accurate, users of Hygrade Water product or information within this document must make their own assessment of suitability for their particular application. Product dimensions are nominal only, and should be verified if critical to a particular installation. No warranty is either expressed, implied, or statutory made by Hygrade Water unless expressly stated in any sale and purchase agreement entered into between Hygrade Water and the user.

November 2022