

E2 Combi III Sluice Valve with Flanged Ends

A high quality flanged tee piece comprising of three flanged outlets and integral E2 valves.



TECHNICAL GUIDE: **VH1.3**

Applications

Water reticulation
Potable water
Irrigation

Product Attributes

Replaces multiple products
Fewer fittings required

Approvals/Standards

Manufactured according to EN 1563 (GGG 400 – DIN 1693) and DIN 3476
Flanges drilled to DIN 2501 – PN 10 according to EN 1092-2
Complies with all quality and test requirements of RAL quality mark 662
Design to AS2638

Quality

ISO 9001:2008 Quality Management Standard

A high quality flanged tee piece comprising of three flanged outlets and integral E2 valves.

The short style provides for space saving installation and lower material, labour, transport and stockholding costs. The compact design enables the valve chamber to be made from sectional concrete giving typical savings of 25 % in chamber construction.

Design Specifications

- Body, bonnet and wedge manufactured with ductile iron EN-GJS-400-18.
- Epoxy powder coated inside and out, according to DIN 30677-T2.
- Stem O rings manufactured with elastomer, embedded in non-corrosive material and replaceable under pressure (according to ISO 7259). O ring bush made of MS 58.
- Wipe ring, back seal and bonnet gasket manufactured with elastomer.
- Stainless steel spindle St 1.4021 (X20Cr13), with rolled thread.
- Allen screws St 8.8 DIN 912 are absolutely corrosion-safe as they are sunk into the body, sealed, and by pass through the bonnet gasket.
- POM friction washers and protecting ring, guarantees smooth spindle guiding.
- PE edge protecting ring prevents damage during transport and storage.
- Wedge fully rubberized with vulcanized elastomer inside and out, and wedge nut made of dezincification resistant brass CuZn36Pb3As.
- Generous oversizing of the required thread length in the wedge nut guarantees highest possible breaking torques.
- Wedge guide manufactured with wear-resistant plastic with high gliding features - optimally placed design guarantees lowest wear and tear and lowest closing torques.
- Flanges drilled to AS4087 B5.
- Mounting points undrilled in standard version; surcharge for drilling.
- Valve design is the same as the E2 approved to AS2638.



FIG. 1

Accessories

- Actuator adaptors
- Operating caps
- Handwheels
- Position switches and indicator



FIG. 2

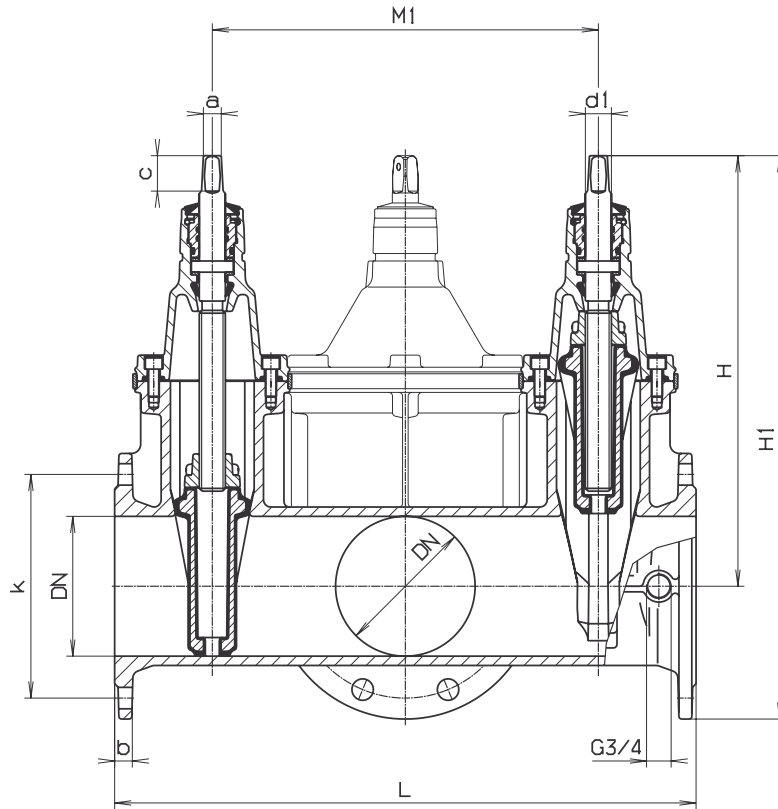


FIG. 3

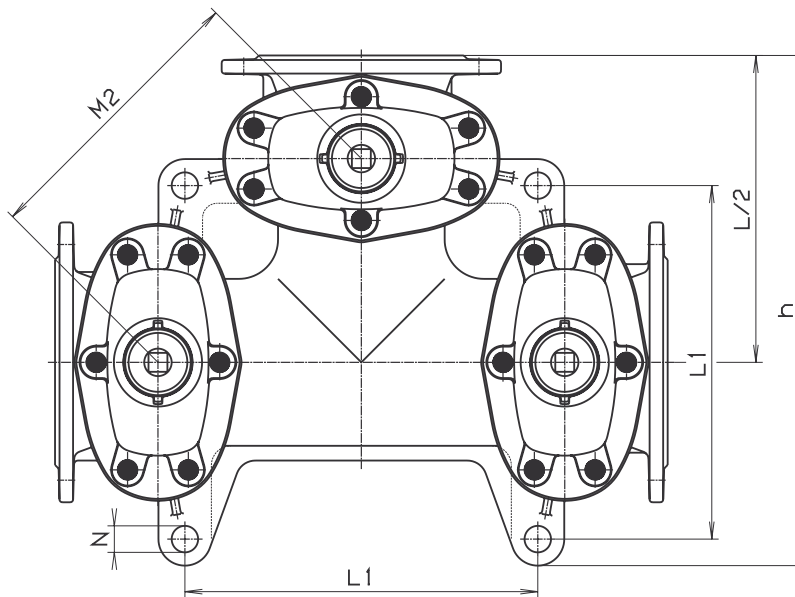


FIG. 4

TABLE 1

DN	E2 Combi III without vertical centre outlet										Spindle				Weight kg	No. of valves
	L	H	H1	k	b	M1	M2	L1	h	N	a	c	d1	2		
100	555	373	483	180	19	365	258	212	411	27	19,3	38	25	68,0	74,0	3
150	625	462	605	240	19	415	293,5	360	520	27	19,3	38	28	105,0	115,0	3



Scan for more
information

Disclaimer: While every effort has been made to ensure that the information in this document is correct and accurate, users of Hygrade Water product or information within this document must make their own assessment of suitability for their particular application. Product dimensions are nominal only, and should be verified if critical to a particular installation. No warranty is either expressed, implied, or statutory made by Hygrade Water unless expressly stated in any sale and purchase agreement entered into between Hygrade Water and the user.

January 2019

0800 494 723
hygradewater.co.nz

102 Neilson Street
Onehunga, Auckland 1061, New Zealand
PO Box 58142, Botany, Auckland 2163

