

# Hawle Synoflex End Cap

Hawle Synoflex End Cap allows you to terminate a pipeline quickly and easily.



TECHNICAL GUIDE: **PF2.4**

## Applications

Pump stations  
Treatment plants  
Pipelines  
Pipe repairs

## Product Attributes

Fits most common pipe materials  
Restraint End Cap  
Wide fitting range  
No liners required

## Approvals/Standards

EN 14525:2004 Ductile Iron  
Potable water use to AS 4020:2018  
Kiwa BRL-K 775/03  
WSAA Approval 2021

## Quality

ISO 9001 Quality  
Management Systems

An easy to install quality range of restraint end caps from Hawle.  
High tolerance range to accept DI, PE/PVC and AC pipes.

### Product Attributes

Includes a radial 2" tapped thread for easy installation of pipeline test equipment.



FIG. 1

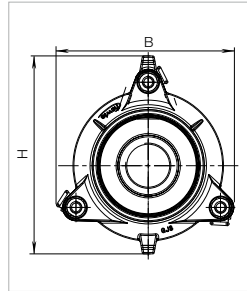


FIG. 2

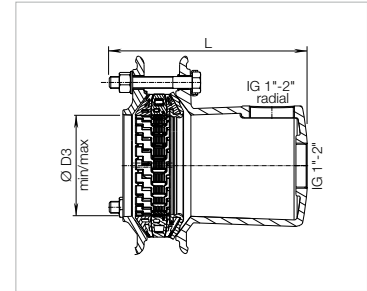


FIG. 3

TABLE 1 Synoflex end cap

Hygrade Code	DN	MOP (PN)	Socket				L	Weight (kg)
			B	H	Pipe $\varnothing$ D3 min / max	Bolts		
GBCSYN100T-C	100	16	226	260	104 - 132	3x M16	256	8.8
GBCSYN150T-C	150	16	315	350	155 - 192	4 x M16	279	15.2



Scan for more  
information

**Disclaimer:** While every effort has been made to ensure that the information in this document is correct and accurate, users of Hygrade Water product or information within this document must make their own assessment of suitability for their particular application. Product dimensions are nominal only, and should be verified if critical to a particular installation. No warranty is either expressed, implied, or statutory made by Hygrade Water unless expressly stated in any sale and purchase agreement entered into between Hygrade Water and the user.

February 2022

0800 494 723  
hygradewater.co.nz

102 Neilson Street  
Onehunga, Auckland 1061, New Zealand  
PO Box 58 142, Botany, Auckland 2163

**HW** HYGRADE  
WATER