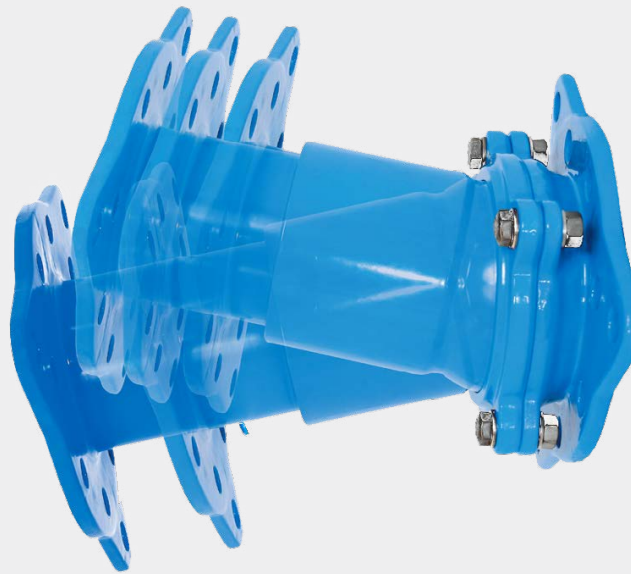


Hawle-Vario Telescopic Pipe Spool

A flanged telescopic fitting with integral ball and socket joint that allows for adjustable length and installation deflection up to 10 degrees.



TECHNICAL GUIDE: **PF2.7**

Applications

Potable water and wastewater pipelines

Water main renewals

Pipe misalignment

Dismantling point

Product Attributes

Adjustable flange to flange length

Available in short and long versions

Allows for deflection up to 10°

Quick and easy installation

Quality

ISO 9001:2008 Quality Management Standard

A flanged telescopic fitting with integral ball and socket joint that allows for adjustable length and installation deflection up to 10 degrees.

Design Specifications

- All components made of ductile iron and coated by GSK epoxy powder inside and out
- Tension lock assembly and locking ring are stainless steel
- Suitable for an operating pressure up to 16 bar
- Adjustable length via a telescopic mechanism:
 - For DN100 short version, flange to flange length adjustment of 150 to 216mm
 - For DN100 long version, flange to flange length adjustment of 216 to 350mm
- Once installed, tension bolts lock the HAWLE-VARIO at the desired length
- Locking bars prevent further movement once installed

Applications

- Connecting pipelines where alignment or spacing between flanges prevent the use of normal techniques
- As a dismantling joint where future work may require removal and re-installation of inline components

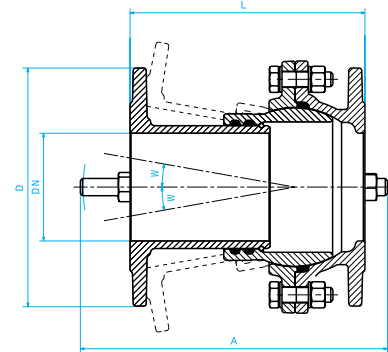


FIG. 1

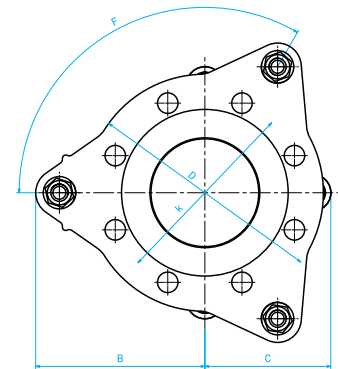









FIG. 2

| Code | DN | Version | PN | Adjusting range L (mm) | A | B | C | D | F | k | Angle W | Weight (kg) |
|---|-----|---------|----|------------------------|-----|-----|-----|-----|----------|-----|---------|-------------|
|  50 | 50 | Short | 16 | 150-207 | 285 | 212 | 87 | 165 | 3 x 120° | 125 | 0-10° | 8.9 |
|  50 | 50 | Short | 16 | 207-323 | 415 | | | | | | | 10.2 |
|  80 | 80 | Long | 16 | 150-214 | 285 | 247 | 107 | 200 | 3 x 120° | 160 | 0-10° | 12.9 |
|  80 | 80 | Long | 16 | 214-344 | 415 | | | | | | | 15.2 |
| PSDFHV100S | 100 | Short | 16 | 150-216 | 285 | 267 | 117 | 220 | 3 x 120° | 180 | 0-10° | 14.8 |
| PSDFHV100L | 100 | Long | 16 | 216-350 | 415 | | | | | | | 17.3 |
| PSDFHV150S | 150 | Short | 16 | 175-250 | 330 | 380 | 190 | 285 | 4 x 90° | 240 | 0-10° | 25.4 |
| PSDFHV150L | 150 | Long | 16 | 250-408 | 480 | | | | | | | 29.3 |
| PSDFHV200S | 200 | Short | 16 | 195-292 | 360 | 229 | 229 | 340 | 4 x 90° | 297 | 0-8° | 48 |
| PSDFHV200L | 200 | Long | 16 | 280-462 | 530 | | | | | | | 52 |
|  200 | 200 | Short | 10 | 195-292 | 360 | | | | | | | 48 |
|  200 | 200 | Long | 10 | 280-462 | 530 | | | | | | | 52 |

Note:  = Available on request. Indent.

Movements are not concurrent. Maximum deflection in one plane may result in less deflection being available in all other planes.



Scan for more information

Disclaimer: While every effort has been made to ensure that the information in this document is correct and accurate, users of Hygrade Water product or information within this document must make their own assessment of suitability for their particular application. Product dimensions are nominal only, and should be verified if critical to a particular installation. No warranty is either expressed, implied, or statutory made by Hygrade Water unless expressly stated in any sale and purchase agreement entered into between Hygrade Water and the user.

March 2022