

TOP X

The ideal drainage channel for houses, courtyards, patios and gardens.



TECHNICAL GUIDE: **DC1.1**

Applications

Garage entrances

Courtyards

Terraces

Gardens

Parks

Product Attributes

Choice of 2 grates – slotted and mesh

Load rated to Class A 15kN

Galvanised grating or PP Composite

Environmentally friendly with 100% recycled PP channel

Low weight

High stability and functionality

Approvals/Standards

Load rating as per EN 1433

Quality

ISO 9001:2008 Quality Management System

TOP X

Designed for houses, courtyards, patios and gardens.

Applications

- Garage entrances
- Courtyard areas
- Terraces
- Gardens
- Parks

Solutions

- High stability and functionality
- Low weight
- Preformed supports for simple pipe connection
- Gratings made of recycled composite or galvanised steel

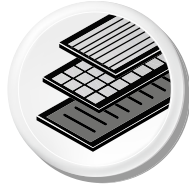
Requirements

- Continually withstands daily loads
- Be easy to transport and simple to install
- Be resistant to environmental effects (frost, heat and moisture)
- Be visually pleasing



FIG. 1 Private courtyard

The benefits of TOP X Channels



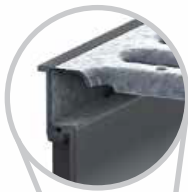
Numerous design possibilities

- Different grating designs: recycled composite or galvanised steel
- = Flexibility



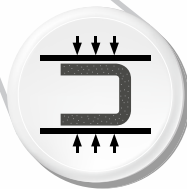
Low weight ensures easy handling on site

- Significantly lighter than channels made of concrete
 - Especially easy to transport and process
- = Lower costs



Locking mechanism

- Boltless locking safe clamping
- = Safety



High-quality material

- Robust and unbreakable
 - Elastic and especially resistant recycled composite
- = Safety



Round channel

- Better hydraulic performance
- = Safety



Quick installation

- Easy to process
 - Tongue and groove system for immediate laying
 - Direct paving possible
- = Cost saving

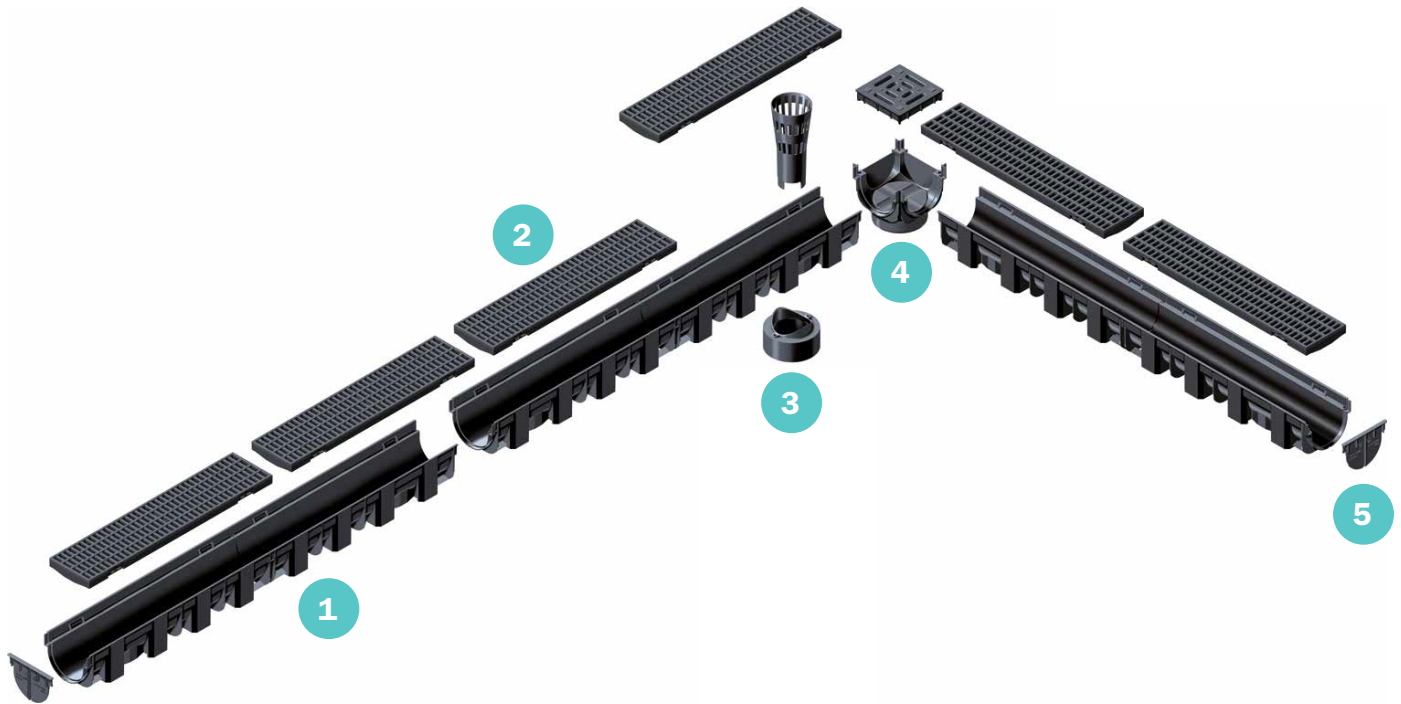
Components

Load Classes

European Standard EN 1433



Load Class A 15kN
Approximate Wheel Load 330kg



- 1 Channels made of PP recycled composite, according to EN 1433, CE-conform, with tongue and groove connection for exact installation
- 2 Various grating options - made of recycled composite or galvanised steel
- 3 Various connection possibilities through channel or universal box
- 4 TOP X universal box can be used as corner unit or trash box
- 5 Closed end caps

TOP X

Class A 15kN

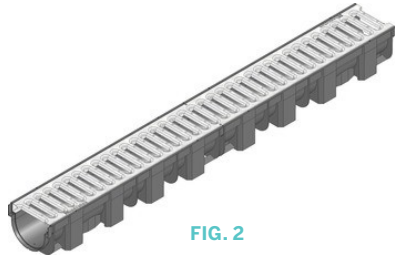


FIG. 2

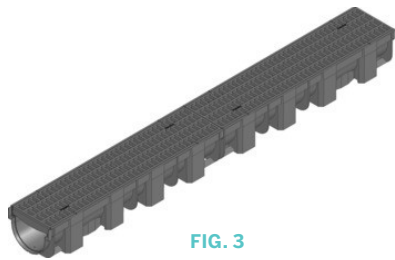
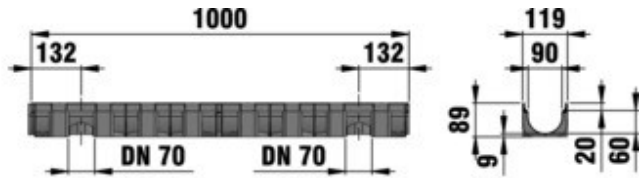


FIG. 3

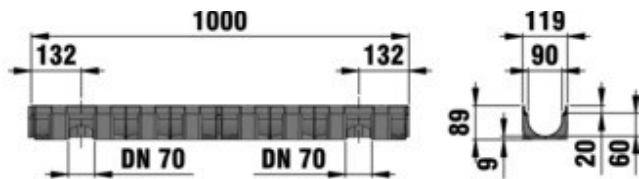


TABLE 1 TOP X A 15kN

Item Code	Description	Intake cross-sect cm ² /m	Drainage cross-sect cm ²	Weight kg	Figure #
CHH01402100	Channel TOP X 100 Galvanised Slotted Black	256	45	2.0	2
CHH01402102	Channel TOP X 100 PP Mesh Black 8 x 12mm	505	45	1.6	3

Accessories

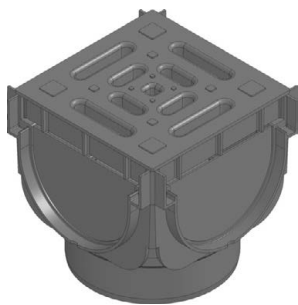


FIG. 4

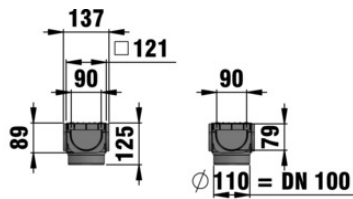


FIG. 5

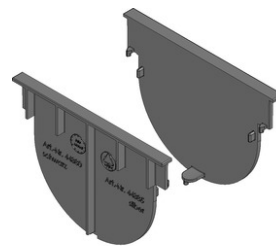


FIG. 6

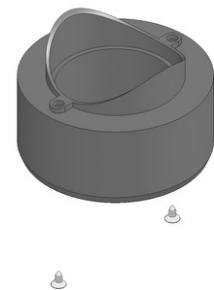


TABLE 2 TOP X A 15kN Accessories

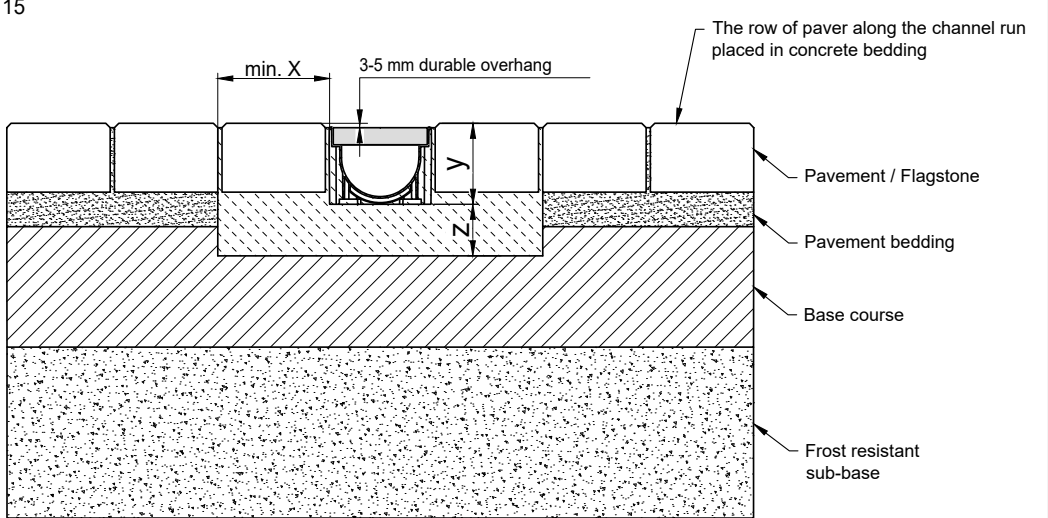
Item Code	Description	Length mm	Width mm	Height mm	Figure #
CHH01402105	Corner Box TOP X Black	137	137	125	4 & 5
CHH01402109	Connection Set TOP X Black with End Caps	-	-	-	6

Installation Guidelines

123456

ABCABC

Installation example
Pavement class A 15
Car trafficked**



The row of paver along the channel run placed in concrete bedding


Pavement / Flagstone

Pavement bedding

Base course

Frost resistant sub-base

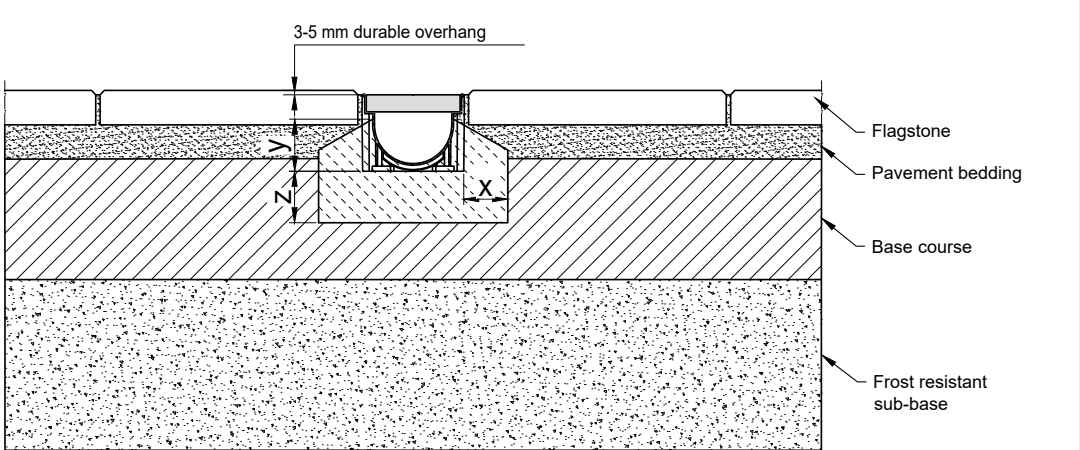
* y = Channel height plus camber

Category according to EN 1433 / DIN 19580		A 15	B 125	C 250	D 400**	E 600	F 900	Applying to following systems: TOP X
Foundation: width x / thickness z / height y (in cm)		10 / 6 / *						
The named concrete quality is a minimum quality***								
EN 206-1 / DIN 1045-2		without danger of frost on the lateral support C 20/25						
		with danger of frost on the lateral support C 30/37 XD 1						
The installation examples / advise constantly are adapted to the technical conditions. With new editions older expenditures lose their validity. Before planning or installation please verify the current version at www.hauraton.com In building construction is a sealing layer below the channels necessary.		Date: 25.10.2018		Our general installation instructions apply.		Format DIN A4 scale 1:5		 Unit 4, Frenchs Avenue LU6 1BH Dunstable / Bedfordshire Tel. +44 1582 50 1380 technical@hauraton.co.uk
		0000079255.dwg EBBw						
		RF-TOP X Rinnenunterteil, schwarz, Einbaubeispiel Klasse A 15 PKW befahrbar in Pflaster						

123456

ABCABC

Installation example
Flagstone class A 15




Flagstone

Pavement bedding

Base course

Frost resistant sub-base

* y ≥ Channel height - 4 cm

Category according to EN 1433 / DIN 19580		A 15	B 125	C 250	D 400**	E 600	F 900	Applying to following systems: TOP X
Foundation: width x / thickness z / height y (in cm)		5 / 6 / *						
The named concrete quality is a minimum quality***								
EN 206-1 / DIN 1045-2		without danger of frost on the lateral support C 20/25						
		with danger of frost on the lateral support C 30/37 XD 1						
The installation examples / advise constantly are adapted to the technical conditions. With new editions older expenditures lose their validity. Before planning or installation please verify the current version at www.hauraton.com In building construction is a sealing layer below the channels necessary.		Date: 25.10.2018		Our general installation instructions apply.		Format DIN A4 scale 1:5		 Unit 4, Frenchs Avenue LU6 1BH Dunstable / Bedfordshire Tel. +44 1582 50 1380 technical@hauraton.co.uk
		0000079230.dwg EBBw						
		RF-TOP X Rinnenunterteil, schwarz, Einbaubeispiel Klasse A 15 in großformatige Platte						

Installation Guide



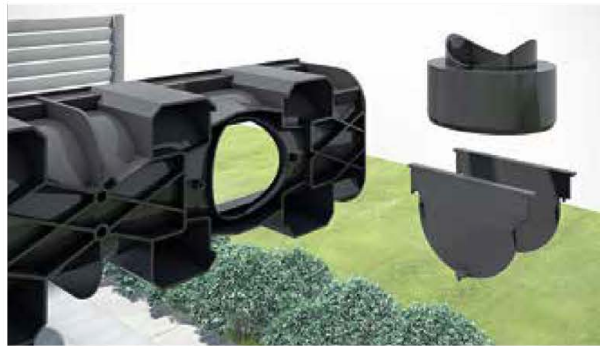
Produce trench in which to lay channel with frost resistant sub base.



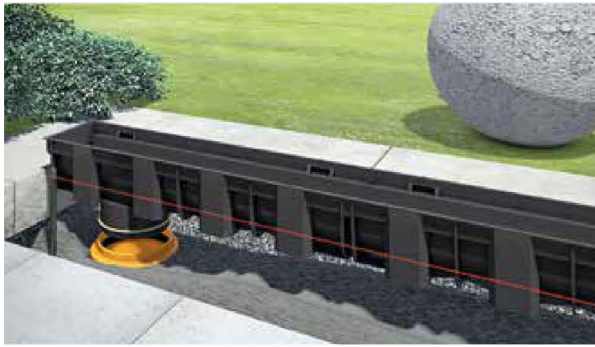
Fill with concrete and compress to foundation.



Produce connection openings.



Fit accessories.



Lay channels.



Haunch the concrete.



Install surface coating.

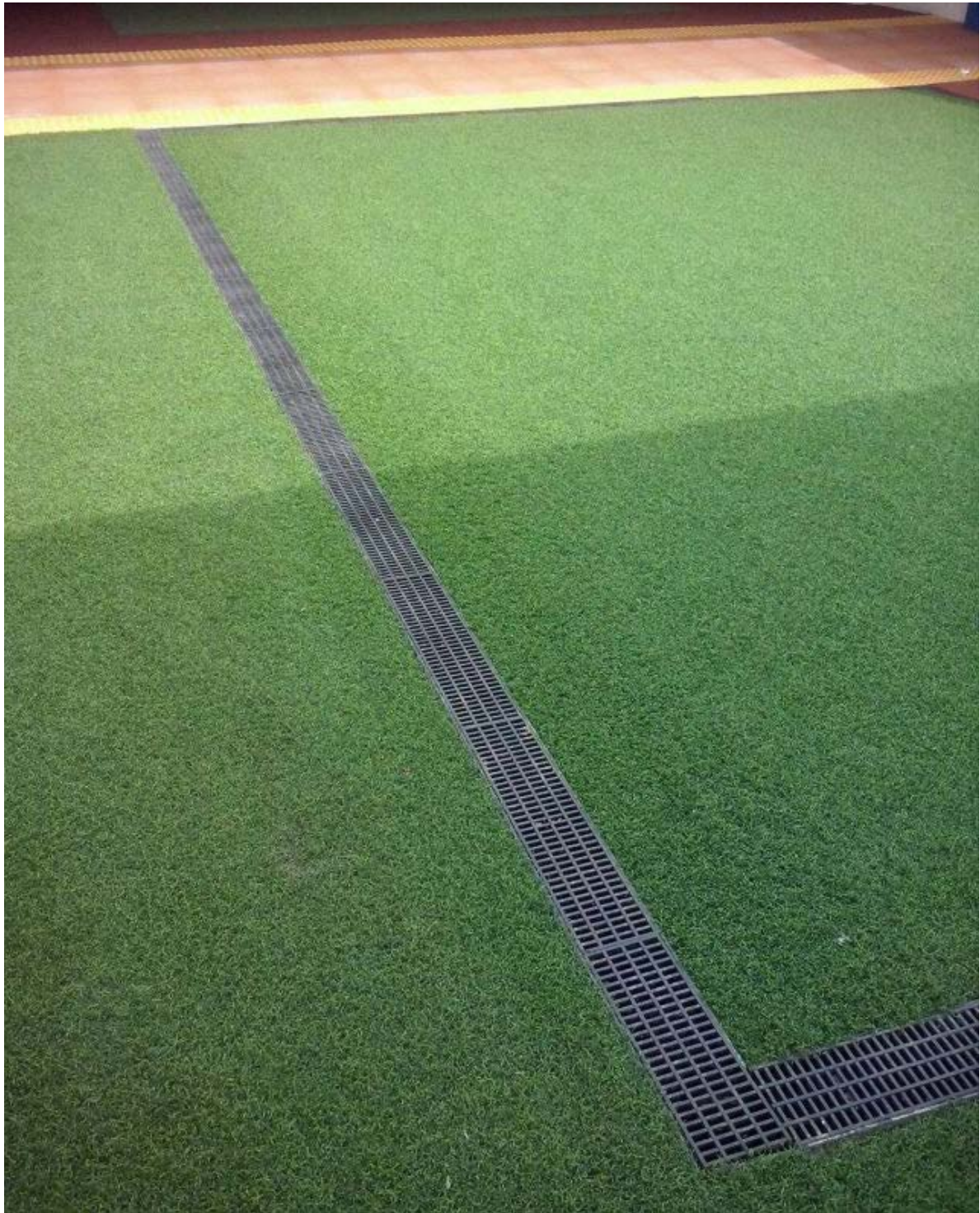


FIG. 7 TOP X Channel & Grate A 15kN PP Composite Black Mesh



Scan for more information

Disclaimer: While every effort has been made to ensure that the information in this document is correct and accurate, users of Hygrade Water Infrastructure product or information within this document must make their own assessment of suitability for their particular application. Product dimensions are nominal only, and should be verified if critical to a particular installation. No warranty is either expressed, implied, or statutory made by Hygrade Water Infrastructure unless expressly stated in any sale and purchase agreement entered into between Hygrade Water Infrastructure and the user.

August 2023

1300 855 092
hygradewater.com.au

BRISBANE (Head Office)
42-44 Blue Eagle Drive
Meadowbrook, QLD 4131

SYDNEY
10 McPherson Road
Smeaton Grange, NSW 2567

HW **HYGRADE WATER**
INFRASTRUCTURE