

Fernco PlumbQwiks

The Fernco PlumbQwik™ range is designed for above ground drainage applications for waste and grey water.



TECHNICAL GUIDE: **PF5.4**

Applications

Grey and Wastewater
Above ground drainage



Product Attributes

Creates a watertight seal between two plain ended pipes
Easy to fit using a nut driver or screw driver
Suitable for -34°C to 40°C constant, 60°C intermittent

Approvals/Standards

AS/NZS 4327-1995

Quality

ISO9001:2015 Quality Management Systems
ISO14001:2015 Environmental Management Systems

Fernco PlumbQwik's are suitable to connect any material pipe provided it fits within the coupler's size range. The couplings can also adapt to pipe misalignment making them ideal for repair applications.



- Creates a watertight seal between two plain ended pipes
- Designed for waste and grey water applications
- Connect what would normally be incompatible pipe systems
- Large range of straight and adaptor variants
- Extremely easy to fit using a nut driver or screw driver
- Remove and re-fit as required

Product Attributes:

- Material: PVC, 1.4401 (316) Stainless Steel
- Temperature Range: -34°C to 40°C constant, 60°C intermittent
- Tightening Torque: 6Nm
- Pressure Rating: 0.5 Bar, 7.25psi



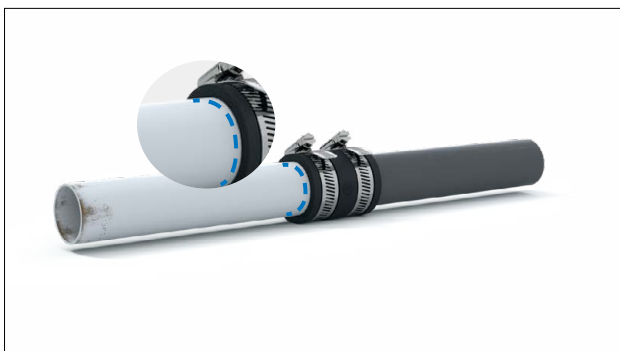
Installation Instructions



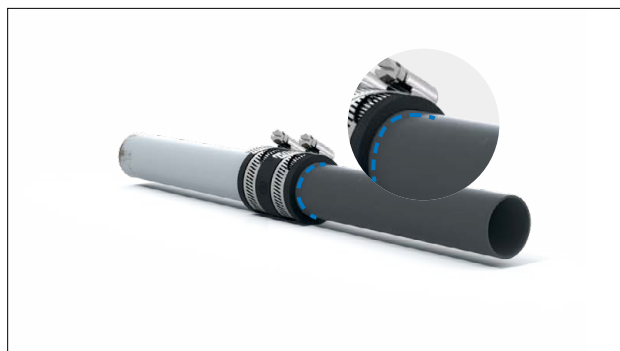
1. Mark both pipes, from the end to be connected, half the width of the coupling, less the required joint gap, which is usually 10mm



2. Slide the coupling fully over one of the pipes.



3. Align the pipes and slide the coupling onto the other pipe, ensuring the coupling face and marked line are flush. Tighten this clamp band.



4. Position the remaining pipe, ensuring the coupling face and marked line are flush. Tighten this clamp band.



5. Tighten the clamp bands to the recommended torque with a torque wrench.

TABLE 1 Straight PlumbQwiks

Item Code	OD Size Range (mm)	Tightening Torque (Nm)	Maximum difference between pipe OD's (mm)
1056.22	47-56	6	9
1056.33	75-84	6	9
1056.90PVC	81-92	6	10
1056.44	100-113	6	10
1055.44	110-123	6	10
1004.44	136-142	6	10
1056.66	150-163	6	10
1055.66	165-167	6	10
1004.66	183-194	6	10
1056.88	206-219	6	10
1056.99	240-256	6	10
1004.88	250-260	6	10
1056.1010	254-269	6	10
1055.1010	265-282	6	10
1001.1212	340-365	6	10

TABLE 2 Adaptor PlumbQwiks

Item Code	Size Range A (mm)	Size Range B (mm)	Tightening Torque (Nm)
1056.43	100-113	75-86	6
1056.10090M	100-113	81-92	6
1051.44	110-123	100-113	6
1006.43	127-142	80-92	6
1006.44	130-143	100-113	6
1056.64	155-163	101-111	6
1051.64	164-178	101-112	6
1051.66	164-178	149-164	6
1006.66	185-198	150-163	6
1006.64	187-199	101-111	6
1004.86	250-260	188-198	6
1006.225	268-284	241-257	6
1006.1010	298-320	259-269	6
1002.1212	339-368	301-320	6
1006.1212	417-400	318-302	6



Scan for more
information

Disclaimer: While every effort has been made to ensure that the information in this document is correct and accurate, users of Hygrade Water product or information within this document must make their own assessment of suitability for their particular application. Product dimensions are nominal only, and should be verified if critical to a particular installation. No warranty is either expressed, implied, or statutory made by Hygrade Water unless expressly stated in any sale and purchase agreement entered into between Hygrade Water and the user.

April 2025